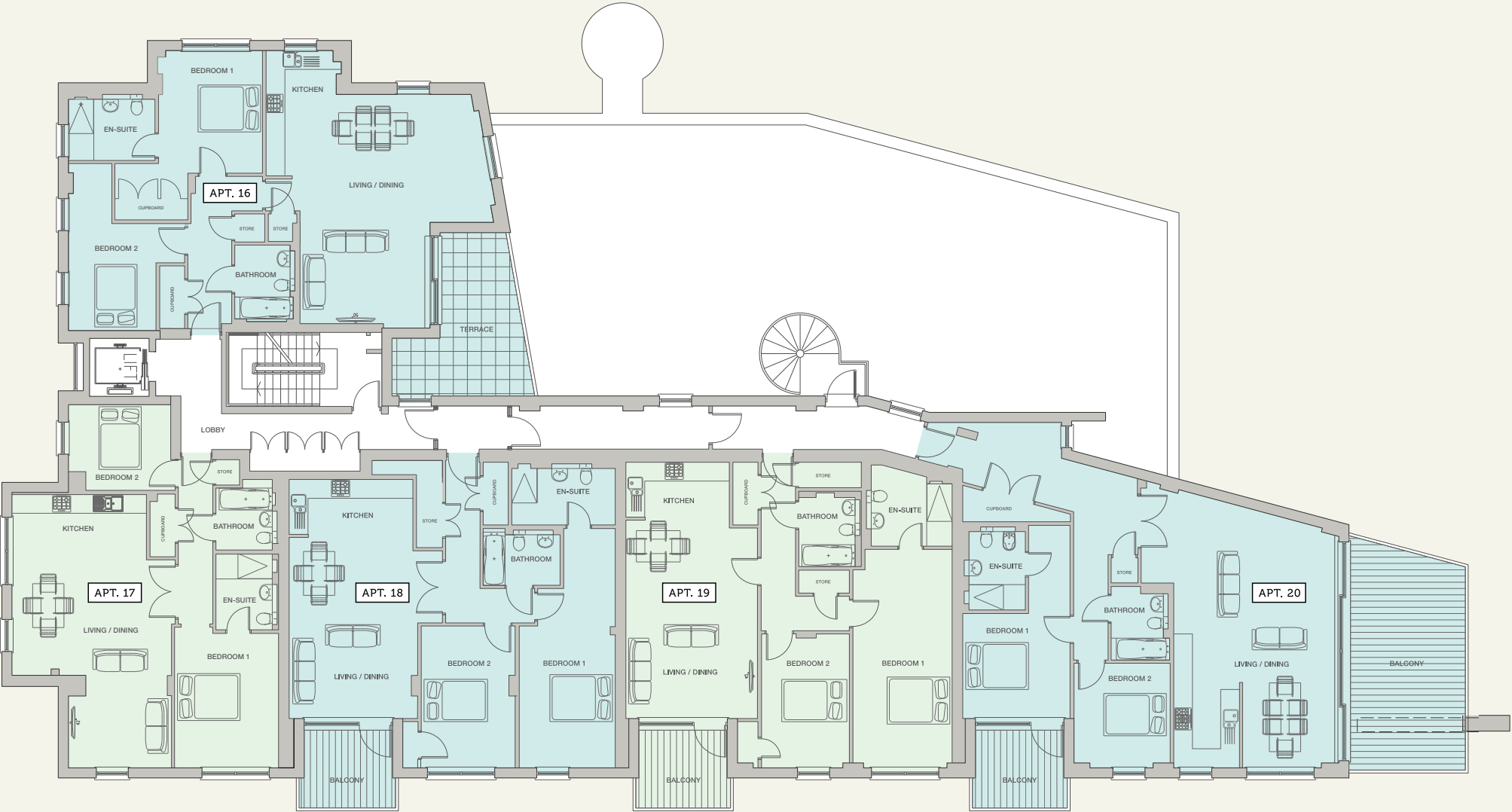


THIRD FLOOR / APARTMENTS 16 - 20



WEST ELEVATION



AREA	m	ft
LIVING ROOM	6.18 x 7.50	20' 3" x 24' 8"
KITCHEN	2.18 x 4.00	7' 2" x 13' 2"
BEDROOM 1	3.30 x 3.91	10' 11" x 12' 10"
BEDROOM 2	2.79 x 3.39	9' 2" x 11' 2"
TERRACE	4.55 x 5.21	14' 11" x 17' 1"

TOTAL (EXTERNAL)	16 sqm	172 sq ft
TOTAL (INTERNAL)	101 sqm	1087 sq ft

SOLD

LIVING ROOM	5.09 x 6.64	16' 8" x 21' 9"
KITCHEN	4.29 x 2.08	14' 11" x 6' 10"
BEDROOM 1	3.35 x 4.27	11' x 14'
BEDROOM 2	3.27 x 2.73	10' 9" x 9'

TOTAL (INTERNAL)	81 sqm	872 sq ft
------------------	--------	-----------

SOLD

LIVING ROOM	4.10 x 5.78	13' 5" x 19'
KITCHEN	3.95 x 1.75	13' x 5' 9"
BEDROOM 1	3.08 x 4.52	10' 1" x 14' 10"
BEDROOM 2	2.98 x 4.52	9' 10" x 14' 10"
BALCONY	3.00 x 2.47	9' 10" x 8' 1"

TOTAL (EXTERNAL)	7 sqm	75 sq ft
TOTAL (INTERNAL)	95 sqm	1023 sq ft

SOLD

LIVING ROOM	4.22 x 6.08	13' 10" x 19' 11"
KITCHEN	3.32 x 1.75	10' 11" x 5' 9"
BEDROOM 1	3.16 x 6.97	10' 5" x 22' 11"
BEDROOM 2	2.80 x 4.27	9' 2" x 14'
BALCONY	3.00 x 2.47	9' 10" x 8' 1"

TOTAL (EXTERNAL)	7 sqm	75 sq ft
TOTAL (INTERNAL)	95 sqm	1023 sq ft

SOLD

LIVING ROOM	5.12 x 7.23	16' 10" x 23' 9"
KITCHEN	2.09 x 4.27	6' 11" x 14'
BEDROOM 1	3.42 x 3.35	11' 3" x 11'
BEDROOM 2	3.06 x 3.32	10' 1" x 10' 11"
BALCONY 1	3.71 x 6.99	12' 2" x 22' 11"
BALCONY 2	3.00 x 2.47	9' 10" x 8' 1"

TOTAL (EXTERNAL)	33 sqm	355 sq ft
TOTAL (INTERNAL)	107 sqm	1152 sq ft

SOLD

The plans and measurements shown are for general guidance only and are subject to change. Dimensions are based on the longest measurable distance in two directions across each space subject to the shape of the space. Areas are based on the measured perimeter of the space. All figures are based on drawn information. Although as accurate as possible at the time of publication they cannot be relied upon for complete accuracy and do not constitute a contract or warranty. September 2013